

# HD WIFI SECURITY CAMERA

## Quick Start Guide



www.anran-cctv.com  
support@anran-cctv.com

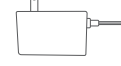
## What's Included



Camera



Screw Pack



Power Adapter



Sticker



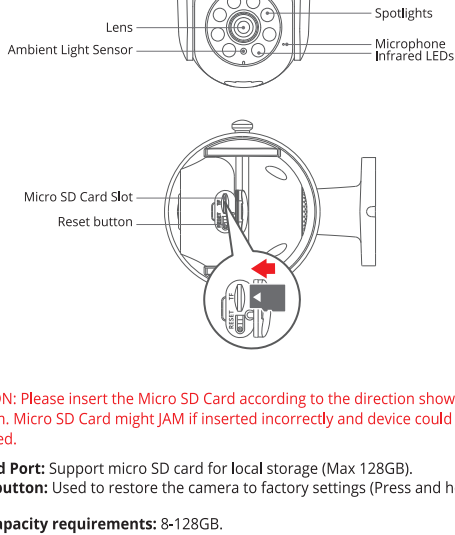
Warning Sticker



User Manual

— 01 —

## Product overview



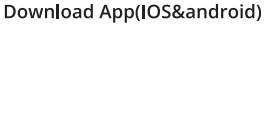
**CAUTION:** Please insert the Micro SD Card according to the direction shown in the diagram. Micro SD Card might JAM if inserted incorrectly and device could be damaged.

**SD Card Port:** Support micro SD card for local storage (Max 128GB).  
**Reset button:** Used to restore the camera to factory settings (Press and hold on 5-8s).  
**Card capacity requirements:** 8-128GB.  
**Read and write speed requirements:** class10 level.  
**File format:** FAT32.

— 02 —

## ARCCTV App installation and Setup

- from Google Play
- from Apple Store
- or Scan the following QR code



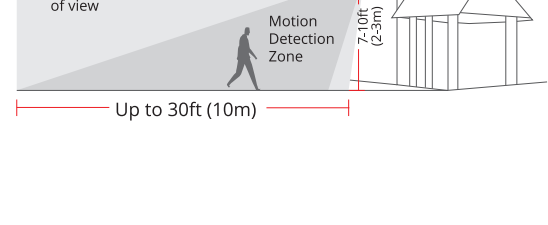
Download App(IOS&android)

— 03 —

## Mounting the camera

### Select Height and location

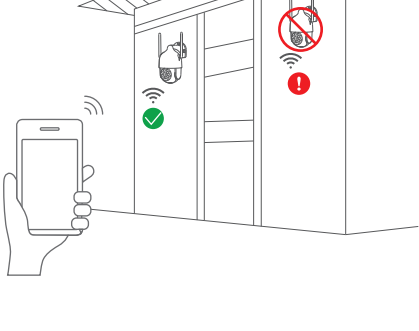
Hang the camera 7-10 ft (2-3 m) above the ground. This height maximizes the detection range of the motion detection of the camera. Avoid placing the camera under direct sunlight.



— 04 —

### Test the Wifi signal at installation position

Use cell phone to test Wifi signal quality at the installation position before installing camera, make sure the Wifi router can provide good Wifi signal.



— 05 —

## Register an account

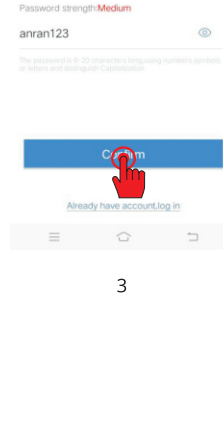
1. Open the "ARCCTV" APP to register an account. Go to the login interface then click "Register".
2. Register with your phone number or email address, click "Confirm", a verification code will be sent to your phone or email-box.



1 2

— 06 —

3. Input the verification code and set a password for the app account, click "Confirm" to complete.



3

— 07 —

## Set up WiFi for the camera

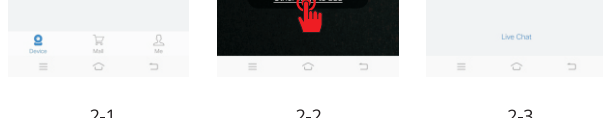
1. Put both of your mobile phone and camera near the router, and the distance should be Within a 5 meters distance.

**Note:** wifi camera can only connect to 2.4 Ghz Wifi signal, Do not support 5Ghz Wifi. Therefore, it only needs to connect to the Wifi signal of the family in 2.4Ghz frequency band for normal use.



— 08 —

1. Put both of your mobile phone and camera near the router, and the distance should be 5-10m.
2. Log in to "ARCCTV", then tap the "+" icon in the center. Tap "Other ways to add", select "Add camera" to add device. Or you can scan the QR code on the camera to add the camera



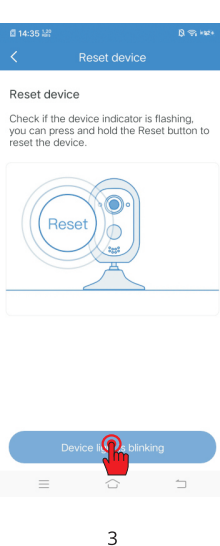
2-1

2-2

2-3

— 09 —

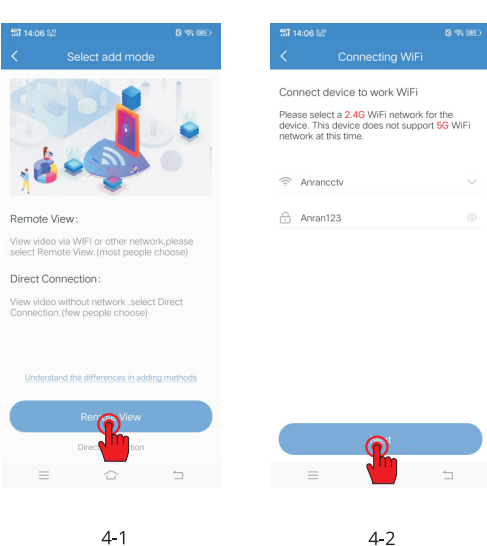
3. Reset the device and wait for the device indicator to flash and proceed to the next step;



3

— 10 —

4. Click "Remote View", and choose the Wi-Fi the device needs to connected with (your home Wi-Fi), input the password and click "Next".

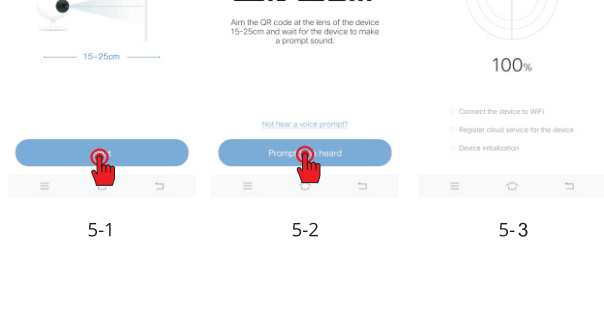


4-1

4-2

— 11 —

5. Using the device to scan the QR code on the mobile phone according to the operation the figure shows, then proceed to the next step after hearing the prompt tone.



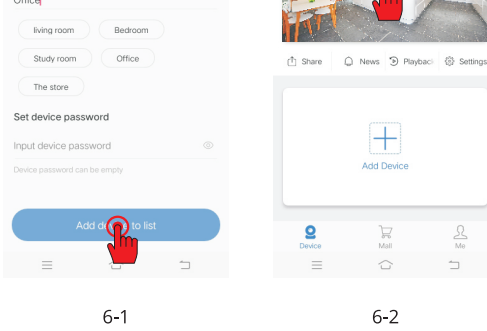
5-1

5-2

5-3

— 12 —

6. After the network configuration is successful, set the name and password for the device to add successfully; then you can view the camera screen in real time.



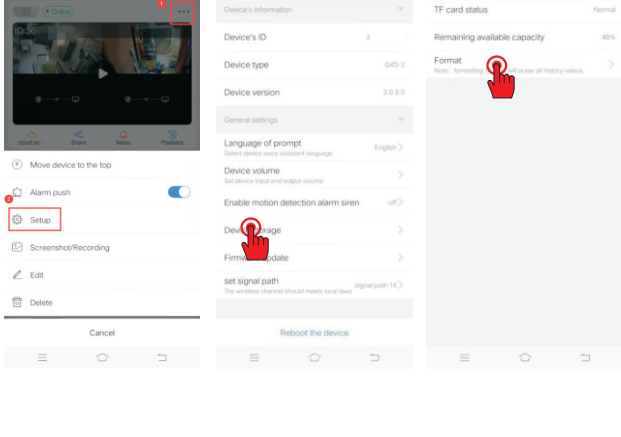
6-1

6-2

— 13 —

## Device Storage

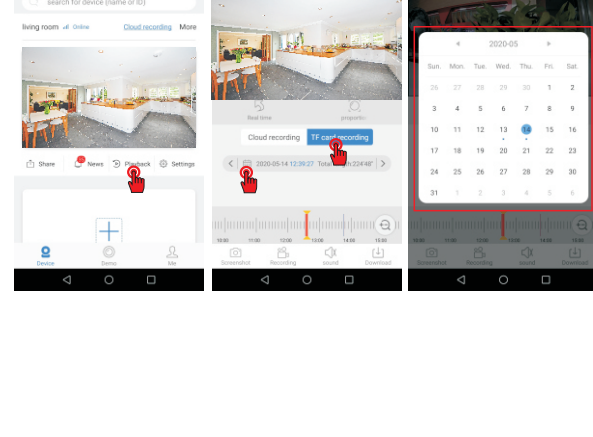
The camera supports up to 128GB Micro TF card. Please format the card after inserted. When the Card is full, it will overwrite and loop recording.



— 14 —

## Remote Playback

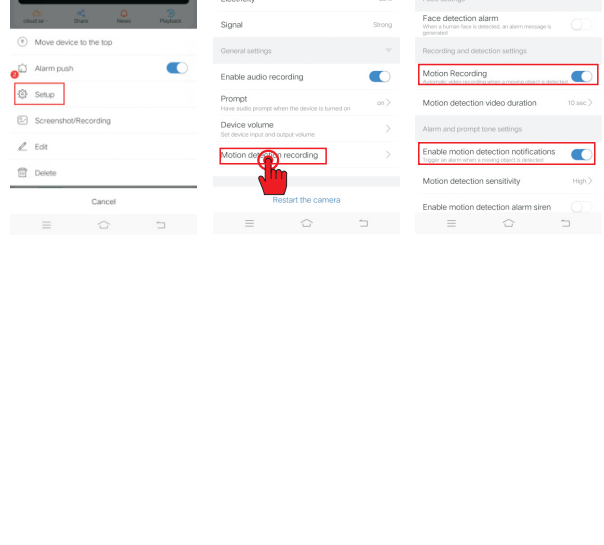
- 1) Click the "Playback" button to enter the playback interface;
- 2) Please select "TF card recording", drag the timeline to select the time period;
- 3) Click " " to select the date.



— 15 —

## Motion detection alarm

With the function on, the App will push an alarm message to you when a motion is triggered. Click "Settings" and choose "Motion Detection recording", turn on the "Motion detection", "Motion Recording" and "Enable motion detection notifications"



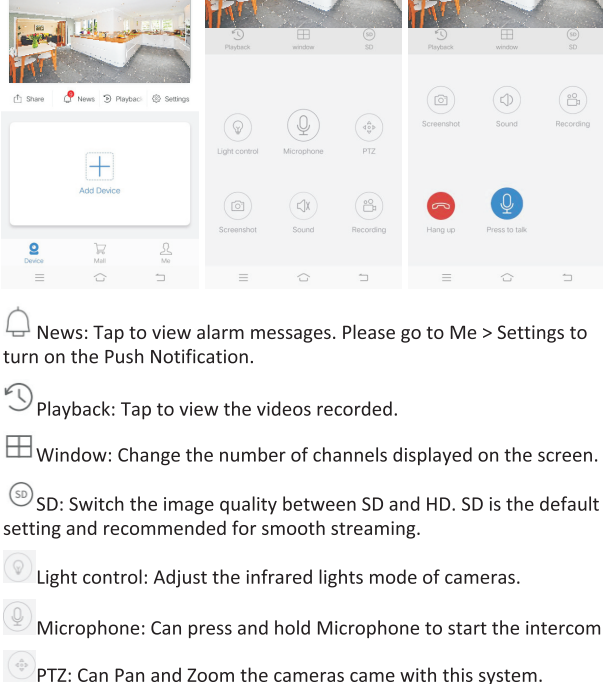
Ⓢ Screenshot: Tap to capture a screenshot to the App. Please go to the Main interface > Screenshot to check.

🔊 Sound: Turn on/off the sound from the camera.

📹 Recording: Tap to start recording the live video; tap again to end and save it into the App.

🗣 Intercom: Tap to start talking with people near the NVR. Press and hold the 🗣 icon to talk; press the icon 🗣 to hang up.(Note: If this feature can't work, the cameras you ordered don't have this feature)

## Functions



🔔 News: Tap to view alarm messages. Please go to Me > Settings to turn on the Push Notification.

📺 Playback: Tap to view the videos recorded.

🖼 Window: Change the number of channels displayed on the screen.

📷 SD: Switch the image quality between SD and HD. SD is the default setting and recommended for smooth streaming.

💡 Light control: Adjust the infrared lights mode of cameras.

🗣 Microphone: Can press and hold Microphone to start the intercom.

🔍 PTZ: Can Pan and Zoom the cameras came with this system.

## FAQ

**Q:** The device cannot be previewed properly?

**A:** Check whether the network is normal, you can place the camera close to the router, and if not, it is recommended to reset the device and add it again.

**Q:** Why is it still in the list of devices after resetting?

**A:** The reset device only resets the network configuration of the camera, but cannot change the configuration on the App, remove the camera, and must be deleted by the App.

**Q:** How to cut the camera network to another router?

**A:** First remove and reset the device on the App and then configure the device again by the App.

**Q:** Why doesn't the device identify the SD card?

**A:** It is recommended to plug in SD card after power cut. Confirm whether the SD card is normally available and the format is FAT32. And the TF card can't be identified when the internet environment is not good.

**Q:** Why I can't get the notifications with my cell phone App?

**A:** Please confirm that the App has been running on the phone, and the relevant reminder function has been opened; Message notification and authority confirmation in the mobile phone system have been opened.