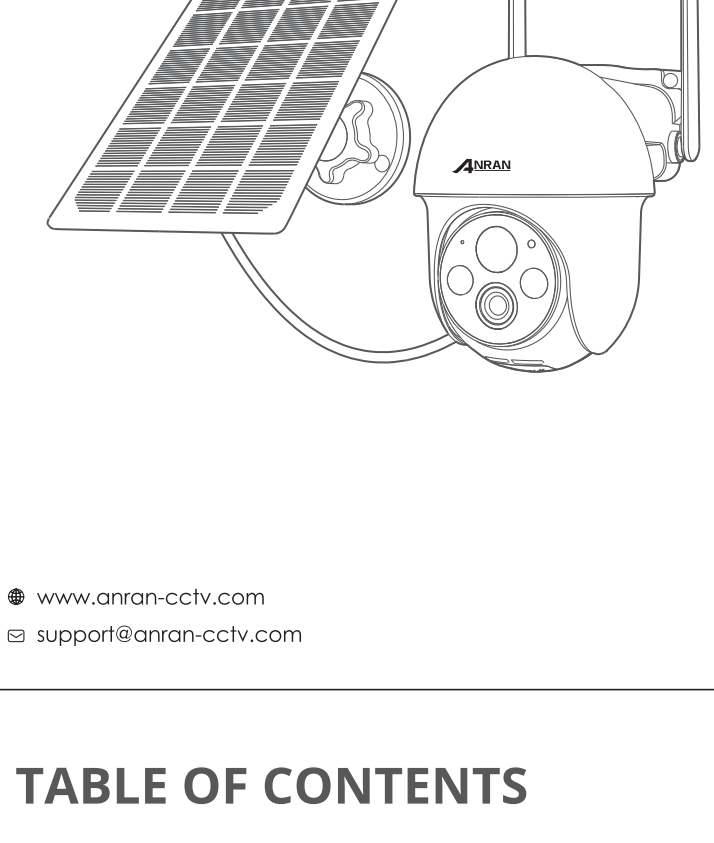


Solar powered -wireless security camera Q01

Quick Start Guide



www.anran-cctv.com
support@anran-cctv.com

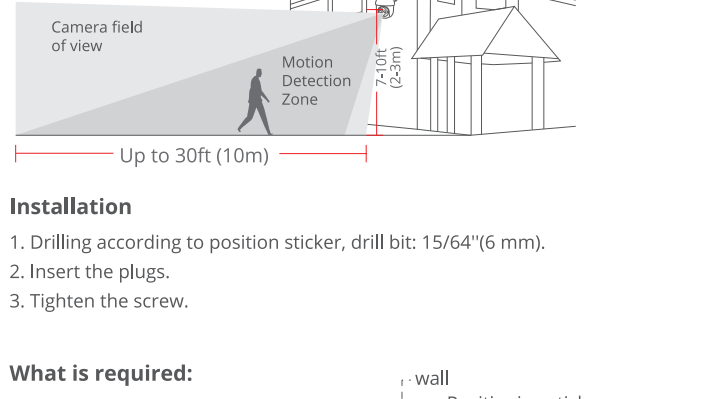
TABLE OF CONTENTS

- 01 What's Included
- 02 Product overview
- 03 App installation and Setup
- 04 Mounting the camera
- 05 Register an account
- 06 Set up WiFi for the camera
- 07 FAQ

What's Included



Product overview



CAUTION: Please insert the Micro SD Card according to the direction shown in the diagram. Micro SD Card might JAM if inserted incorrectly and device could be damaged.

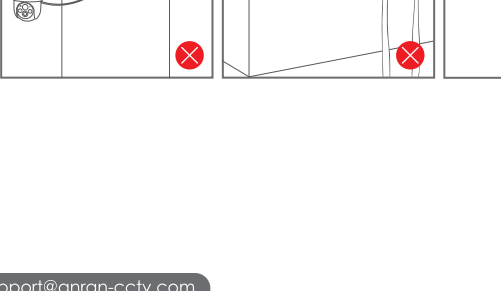
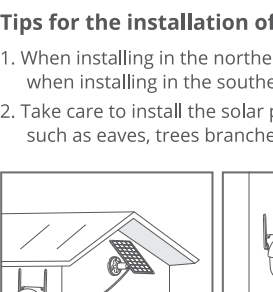
SD Card Port: Support micro SD card for local storage (Max 128GB).
Reset button: Used to restore the camera to factory settings (Press and hold on 5-5s).

Card capacity requirements: 8-128GB.
Read and write speed requirements: class10 level.
File format: FAT32.

ARCCTV App installation and Setup

Search "ARCCTV" on an apple store or google play to download the app.

- from Google Play
- from Apple Store
- or Scan the following QR code



Download App(IOS & android)

Mounting the camera

Select Height and location

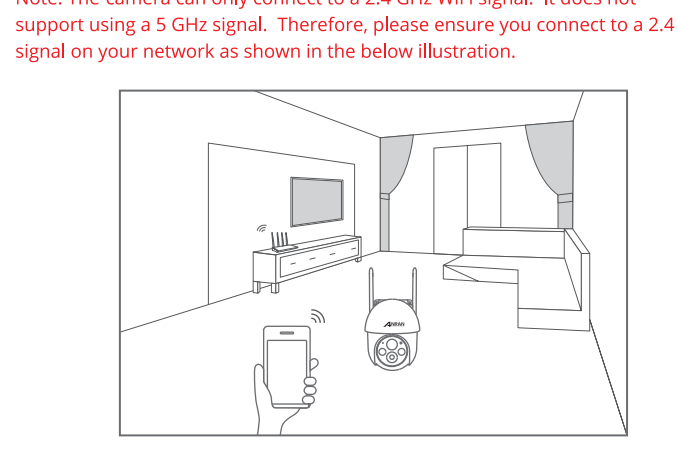
Hang the camera 7-10 ft (2.3 m) above the ground. This height maximizes the detection range of the motion sensor of the camera. Avoid placing the camera under direct sunlight.



Installation

- Drilling according to position sticker, drill bit: 15/64"(6 mm).
- Insert the plugs.
- Tighten the screw.

What is required:



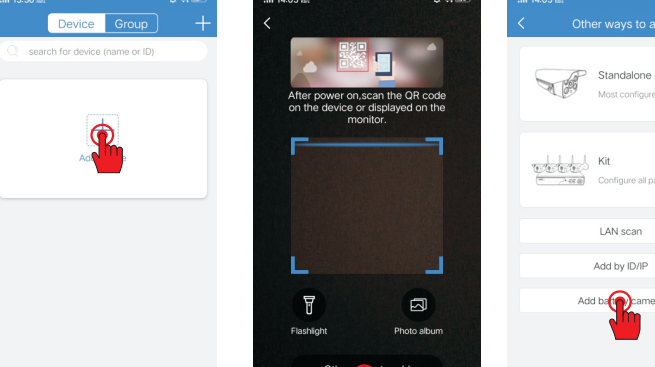
Installation instruction of solar panel

- Keep the installation angle of solar panels about 30-45° with the horizontal plane, as shown in the picture below.
- The installation between the solar panel and the camera is shown in the following figure(open up the silicone cover at the bottom of the camera, remove the small center part of the cover, insert the power cord through the opening and plug it into the USB port and then close the cover taking up any slack in the power cord from the solar panel).



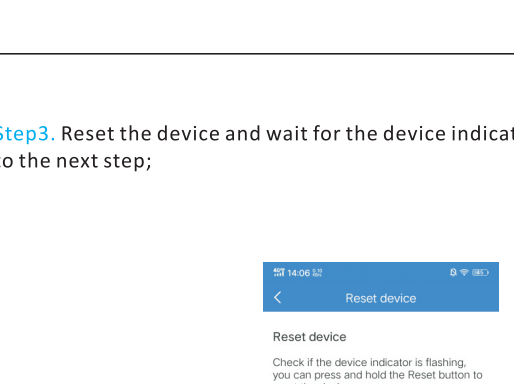
Tips for the installation of solar panel

- When installing in the northern hemisphere, face the panel to the south, and when installing in the southern hemisphere, face the panel to the north.
- Take care to install the solar panel so that the sun is not blocked by any items such as eaves, trees branches, etc.



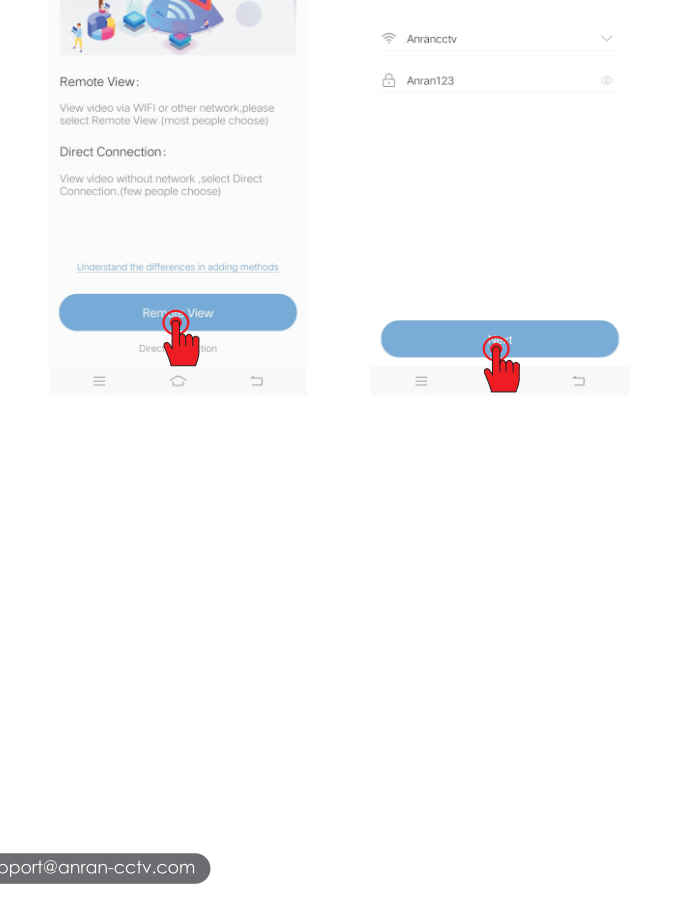
Test the Wifi signal at installation position

Use cell phone to test Wifi signal quality at the installation position before installing camera, make sure the Wifi router can provide good Wifi signal.



Register an account

- Open the "ARCCTV" APP to register an account. Go to the login interface then click "Register" (Figure 1)
- Register with your phone number or email address, click "Confirm", a verification code will be sent to your phone or email-box (Figure 2)
- Input the verification code and set a password for the app account, click "Confirm" to complete (Figure 3)

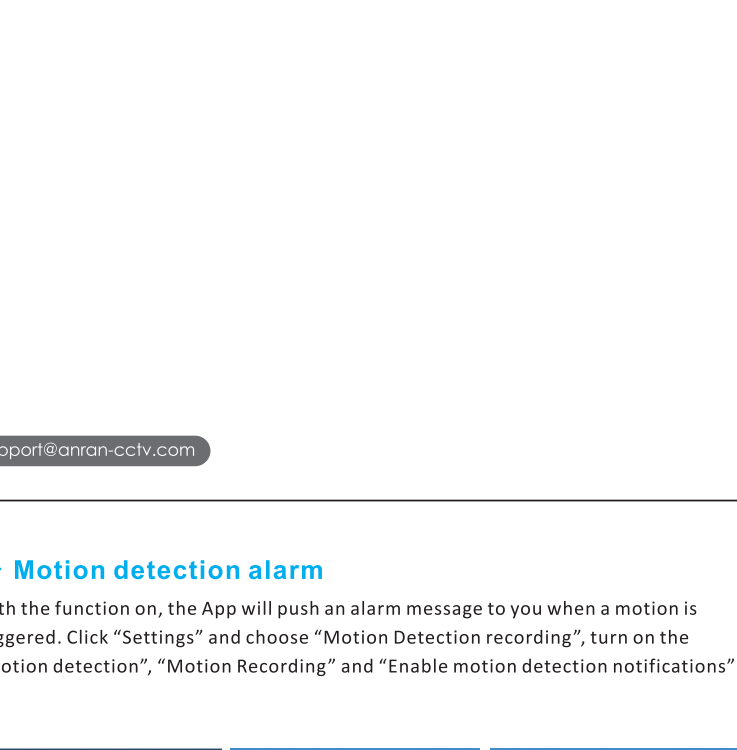


Set up WiFi for the camera

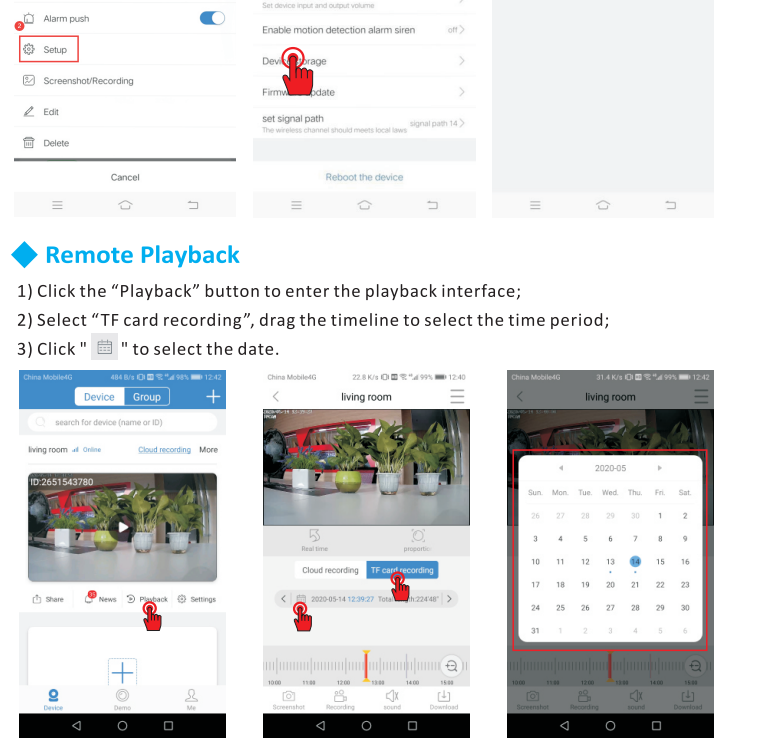
- Bring both your mobile phone and your camera close to your router (max distance of 5 meters/16 feet).
- Note:** The camera can only connect to a 2.4 GHz WiFi signal. It does not support using a 5 GHz signal. Therefore, please ensure you connect to a 2.4 GHz signal on your network as shown in the below illustration.



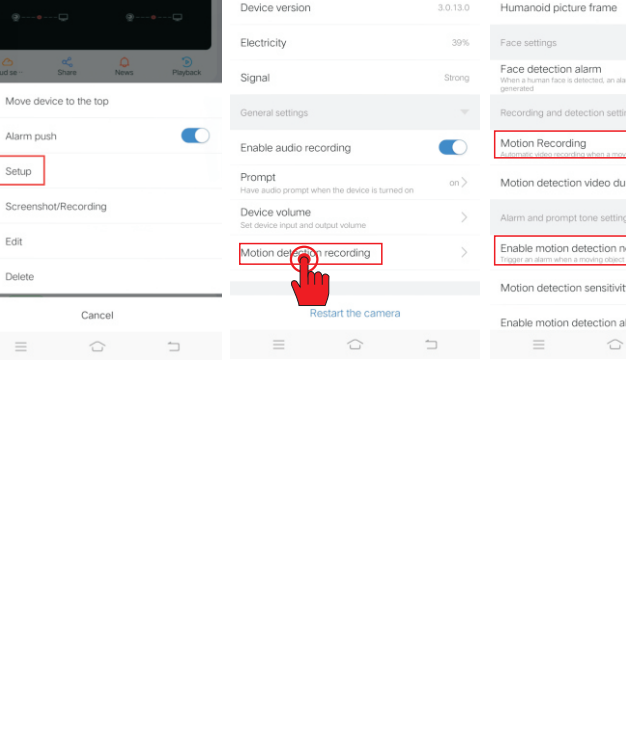
- Step1.** Put both of your mobile phone and camera near the router, and the distance should be 5-10m.
- Step2.** Log in to "ARCCTV", then tap the "+" icon in the center. Tap "Other ways to add", select "Add battery camera" to add device. Or you can scan the QR code on the camera to add the camera.



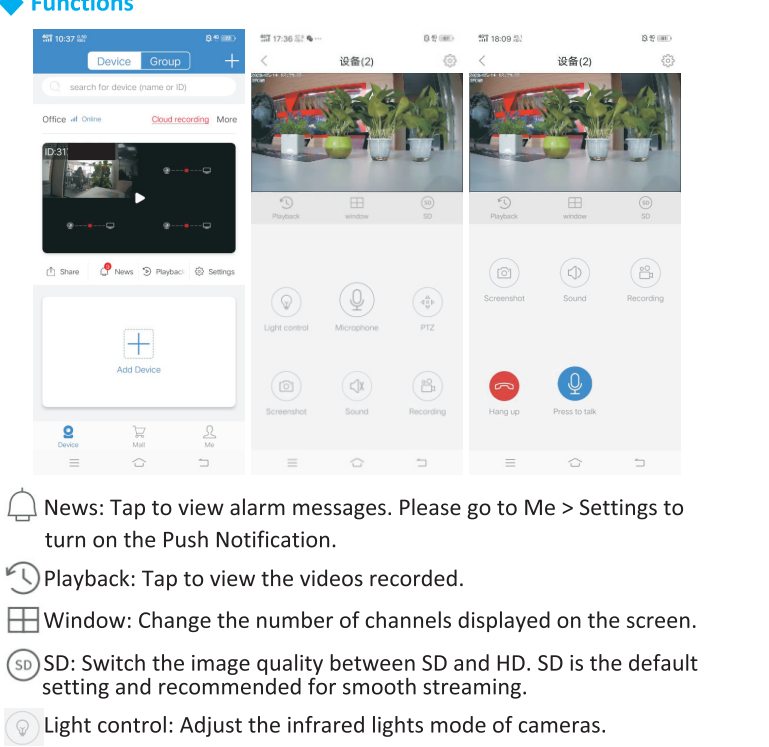
- Step3.** Reset the device and wait for the device indicator to flash and proceed to the next step;



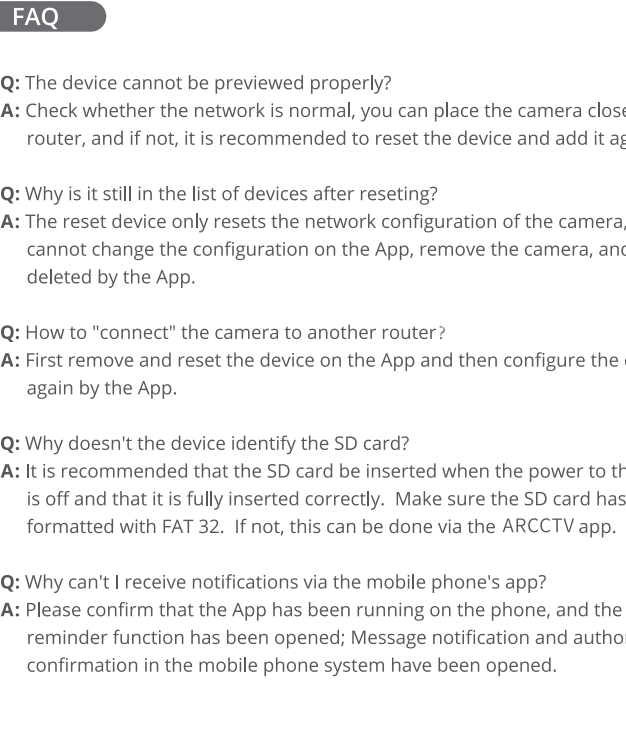
- Step4.** Click "Remote View", and choose the Wi-Fi the device needs to be connected with (your home Wi-Fi), input the password and click "Next".



- Step5.** Using the device to scan the QR code on the mobile phone according to the operation the figure shows, then proceed to the next step after hearing the prompt tone.

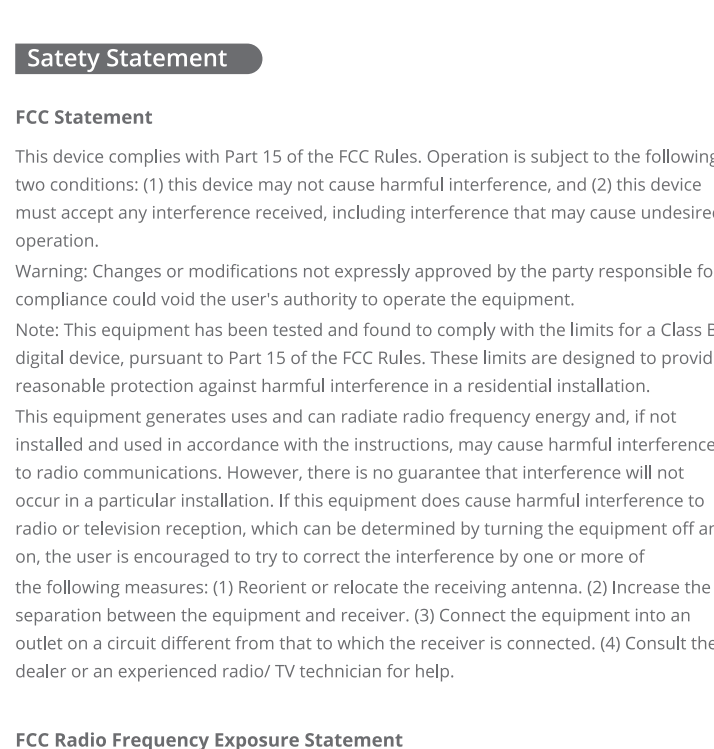


- Step6.** After the network configuration is successful, set the name and password for the device to add successfully, then you can view the camera screen.



Device Storage

The camera supports up to 128GB Micro TF card. Please format the card after inserted. When the Card is full, it will overwrite and loop recording.



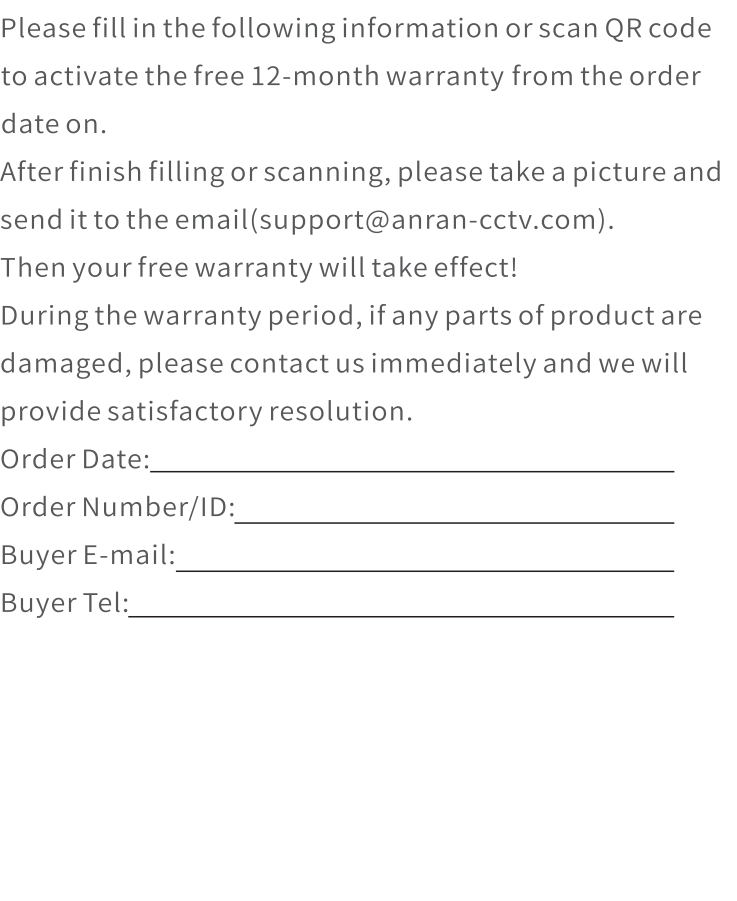
Remote Playback

- Click the "Playback" button to enter the playback interface;
- Select "TF card recording", drag the timeline to select the time period;
- Click " " to select the date.



Motion detection alarm

With the function on, the App will push an alarm message to you when a motion is triggered. Click "Settings" and choose "Motion Detection recording", turn on the "Motion detection", "Motion Recording" and "Enable motion detection notifications"



Functions

- News:** Tap to view alarm messages. Please go to Me > Settings to turn on the Push Notification.
- Playback:** Tap to view the videos recorded.
- Window:** Change the number of channels displayed on the screen.
- SD:** Switch the image quality between SD and HD. SD is the default setting and recommended for smooth streaming.
- Light control:** Adjust the infrared lights mode of cameras.
- Microphone:** Can press and hold Microphone to start the intercom.
- PTZ:** Can Pan and Zoom the cameras came with this system.
- Screenshot:** Tap to capture a screenshot to the App. Please go to the Main interface > Screenshot to check.
- Sound:** Turn on/off the sound from the camera.
- Recording:** Tap to start recording the live video; tap again to end and save it into the App.
- Intercom:** Tap to start talking with people near the NVR. Press and hold the icon to talk; press the icon to hang up.(Note: If this feature can't work, the cameras you ordered don't have this feature)

FAQ

- Q:** The device cannot be previewed properly?
A: Check whether the network is normal, you can place the camera close to the router, and if not, it is recommended to reset the device and add it again.
- Q:** Why is it still in the list of devices after resetting?
A: The reset device only resets the network configuration of the camera, but cannot change the configuration on the App, remove the camera, and must be deleted by the App.
- Q:** How to "connect" the camera to another router?
A: First remove and reset the device on the App and then configure the device again by the App.
- Q:** Why doesn't the device identify the SD card?
A: It is recommended that the SD card be inserted when the power to the camera is off and that it is fully inserted correctly. Make sure the SD card has been formatted with FAT 32. If not, this can be done via the ARCCTV app.
- Q:** Why can't I receive notifications via the mobile phone's app?
A: Please confirm that the App has been running on the phone, and the relevant reminder function has been opened: Message notification and authority confirmation in the mobile phone system have been opened.

Safety Statement

FCC Statement

This device complies with Part 15 of the FCC Rules. Operation is subject to the following two conditions: (1) This device may not cause harmful interference, and (2) this device must accept any interference received, including interference that may cause undesired operation.

Warning: Changes or modifications not expressly approved by the party responsible for compliance could void the user's authority to operate the equipment.

Note: This equipment has been tested and found to comply with the limits for a Class B digital device, pursuant to Part 15 of the FCC Rules. These limits are designed to provide reasonable protection against harmful interference in a residential installation. This equipment generates uses and can radiate radio frequency energy and, if not installed and used in accordance with the instructions, may cause harmful interference to radio communications. However, there is no guarantee that interference will not occur in a particular installation. If this equipment does cause harmful interference to radio or television reception, which can be determined by turning the equipment off and on, the user is encouraged to try to correct the interference by one or more of the following measures: (1) Reorient or relocate the receiving antenna. (2) Increase the separation between the equipment and receiver. (3) Connect the equipment into an outlet on a circuit different from that to which the receiver is connected. (4) Consult the dealer or an experienced radio/ TV technician for help.

FCC Radio Frequency Exposure Statement

The device has been evaluated to meet general RF exposure requirements. The device can be used in fixed/mobile exposure condition. The min separation distance is 20cm.

Notice: Shielded cables
All connections to other computing devices must be made using shielded cables to maintain compliance with FCC regulations.

Warranty Tips

Please fill in the following information or scan QR code to activate the free 12-month warranty from the order date on.

After finish filling or scanning, please send a picture and send it to the email(support@anran-cctv.com).

Then your free warranty will take effect!

During the warranty period, if any parts of product are damaged, please contact us immediately and we will provide satisfactory resolution.

Order Date: _____
Order Number/ID: _____
Buyer E-mail: _____
Buyer Tel: _____

Contact us

www.anran-cctv.com
support@anran-cctv.com