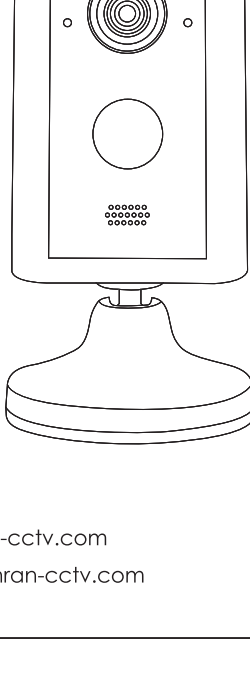


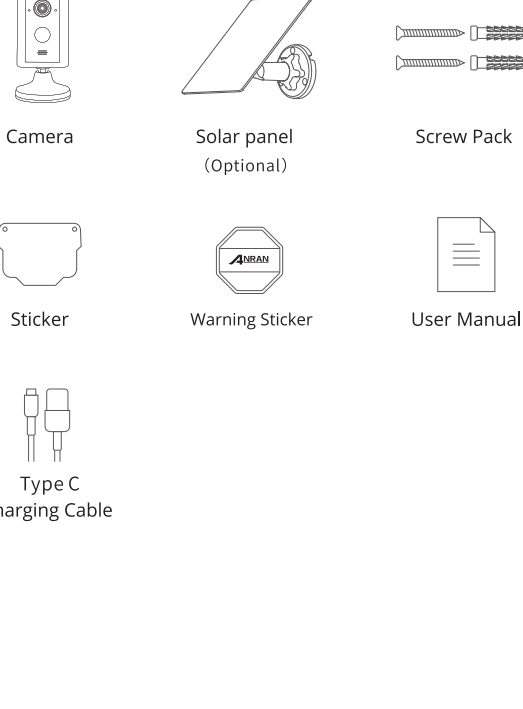
Solar powered -wireless security camera

Quick Start Guide



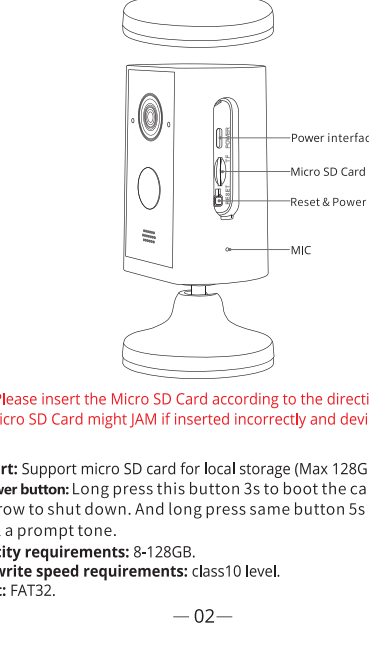
www.anran-cctv.com
support@anran-cctv.com

What's Included



— 01 —

Product overview



CAUTION: Please insert the Micro SD Card according to the direction shown in the diagram. Micro SD Card might JAM if inserted incorrectly and device could be damaged.

SD Card Port: Support micro SD card for local storage (Max 128GB).
Reset & Power button: Long press this button 3s to boot the camera, press three times in a row to shut down. And long press same button 5s to restore the camera till a prompt tone.

Card capacity requirements: 8-128GB.
Read and write speed requirements: class10 level.
File format: FAT32.

— 02 —

ARCCTV App installation and Setup

Search "ARCCTV" on apple store or google play to download the app.

- from Google Play
- from Apple Store
- or Scan the following QR code



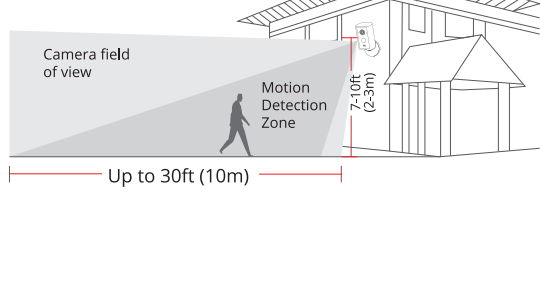
Download App(iOS&android)

— 03 —

Mounting the camera

Select Height and location

Hang the camera 7-10 ft (2-3 m) above the ground. This height maximizes the detection range of the motion detection of the camera. Avoid placing the camera under direct sunlight.



— 04 —

Test the Wifi signal at installation position

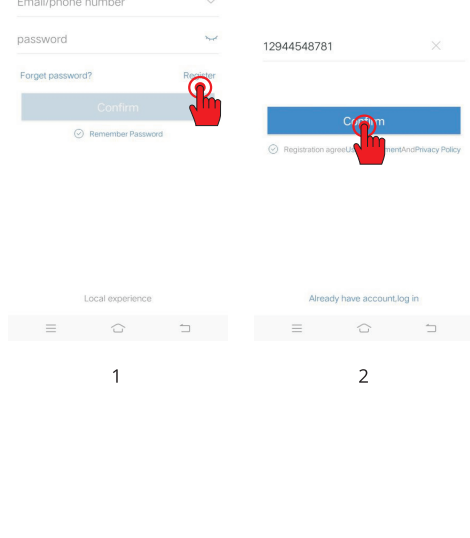
Use cell phone to test Wifi signal quality at the installation position before installing camera, make sure the Wifi router can provide good Wifi signal.



— 05 —

Register an account

- Open the "ARCCTV" APP to register an account. Go to the login interface then click "Register".
- Register with your phone number or email address, click "Confirm", a verification code will be sent to your phone or email-box.

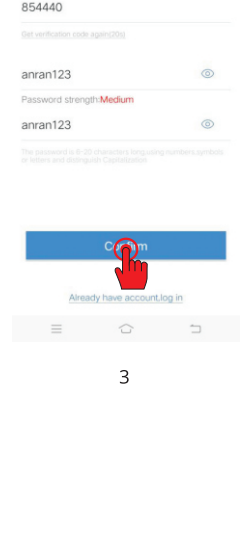


1

2

— 06 —

- Input the verification code and set a password for the app account, click "Confirm" to complete.



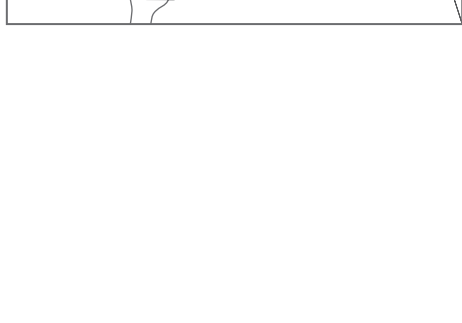
3

— 07 —

Set up WiFi for the camera

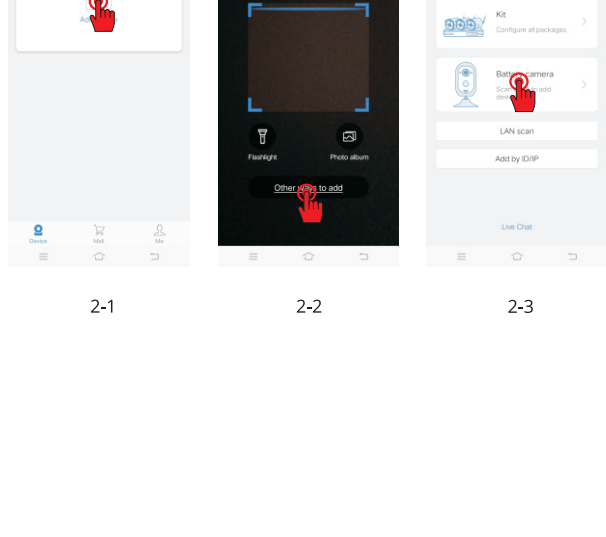
- Put both of your mobile phone and camera near the router, and the distance should be Within a 5 meters distance.

Note: wifi camera can only connect to 2.4 GHz WIFI signal, Do not support 5GHz WIFI.



— 08 —

- Put both of your mobile phone and camera near the router, and the distance should be 5-10m.
- Log in to "ARCCTV", then tap the "+" icon in the center. Tap "Other ways to add", select "Add camera" to add device. Or you can scan the QR code on the camera to add the camera



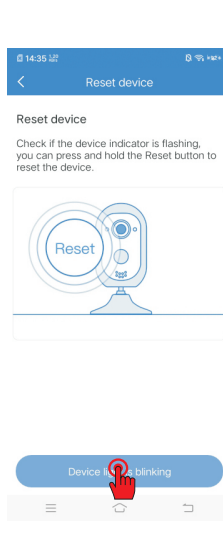
2-1

2-2

2-3

— 09 —

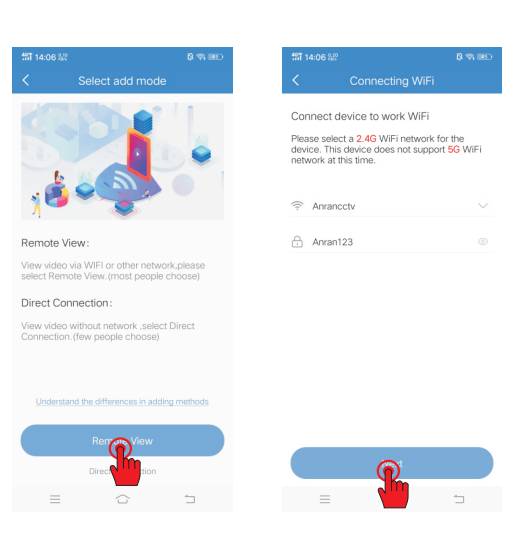
- Reset the device and wait for the device indicator to flash and proceed to the next step;



3

— 10 —

- Click "Remote View", and choose the Wi-Fi the device needs to connected with (your home Wi-Fi), input the password and click "Next".



4-1

4-2

— 11 —

- Using the device to scan the QR code on the mobile phone according to the operation the figure shows, then proceed to the next step after hearing the prompt tone.



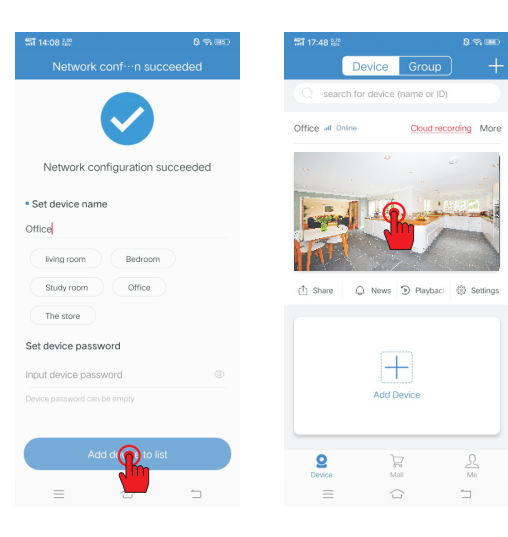
5-1

5-2

5-3

— 12 —

- After the network configuration is successful, set the camera and password for the device to add successfully; then you can view the camera screen in real time.



6-1

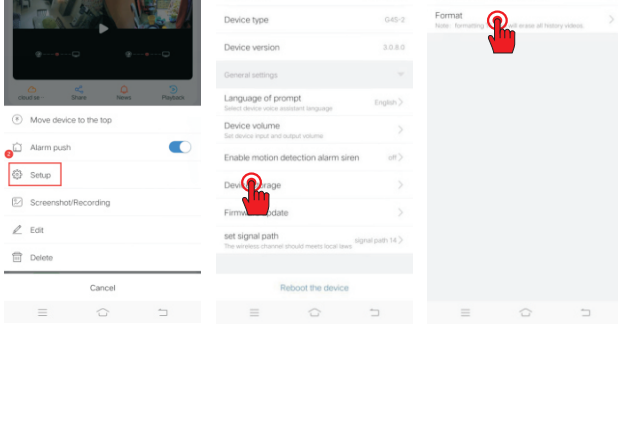
6-2

— 13 —

Device Storage

The camera supports up to 128GB Micro TF card. Please format the card after inserted.

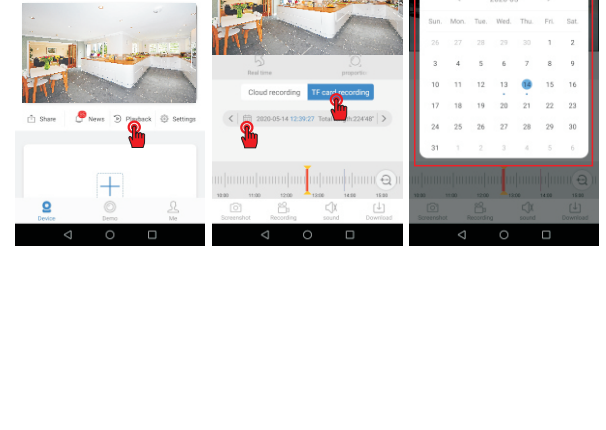
When the Card is full, it will overwrite and loop recording.



— 14 —

Remote Playback

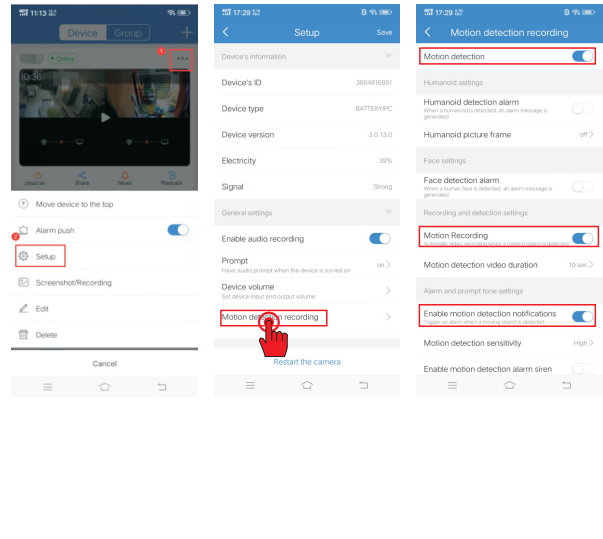
- Click the "Playback" button to enter the playback interface;
- Please select "TF card recording", drag the timeline to select the time period;
- Click " " to select the date.



— 15 —

Motion detection alarm

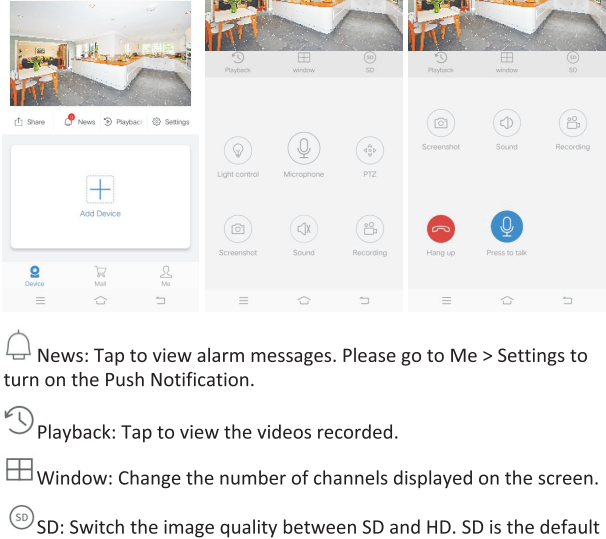
With the function on, the App will push an alarm message to you when a motion is triggered. Click "Settings" and choose "Motion Detection Recording", turn on the "Motion detection", "Motion Recording" and "Enable motion detection notifications".



— 16 —

Functions

- News: Tap to view alarm messages. Please go to Me > Settings to turn on the Push Notification.
- Playback: Tap to view the videos recorded.
- Window: Change the number of channels displayed on the screen.



— 17 —

FAQ

Q: The device cannot be previewed properly?
A: Check whether the network is normal, you can place the camera close to the router, and if not, it is recommended to reset the device and add it again.

Q: Why is it still in the list of devices after resetting?
A: The reset device only resets the network configuration, but cannot change the configuration on the App, remove the camera, and must be deleted by the App.

Q: How to cut the camera network to be another router?
A: First remove and reset the device on the App and then configure the device again by the App.

Q: Why doesn't the device identify the SD card?
A: It is recommended to plug in SD card after power cut. Confirm whether the SD card is normally available and the format is FAT32. And the TF card can't be identified when the internet environment is not good.

Q: Why I can't get the notifications with my cell phone App?
A: Please confirm that the App has been running on the phone, and the relevant reminder function has been opened; Message notification and authority confirmation in the mobile phone system have been opened.

— 18 —

② Screenshot: Tap to take a screenshot to the App. Please go to the Main interface > Screenshot to check.

④ Sound: Turn on/off the sound from the camera.

⑤ Recording: Tap to start recording the live video; tap again to end and save it into the App.

⑥ Intercom: Tap to start talking with people near the NVR. Press and hold the ⑥ icon to talk; press the icon ⑥ to hang up. (Note: If this feature can't work, the cameras you ordered don't have this feature)

— 19 —