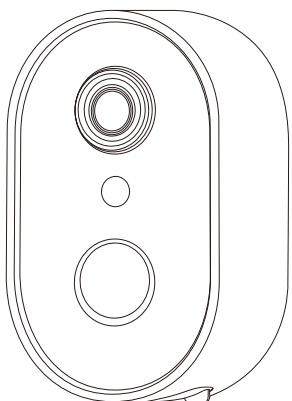


HD wifi security camera
Quick Start Guide

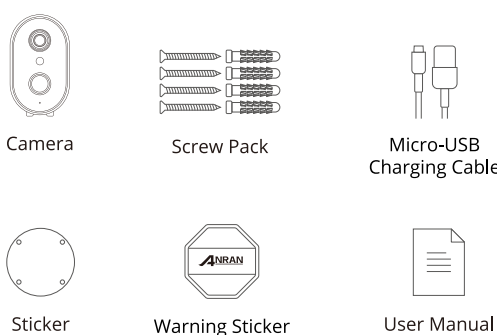


www.anran-cctv.com
support@anran-cctv.com
1-866-958-6988 (US)
44-20 8610 1559 (UK)

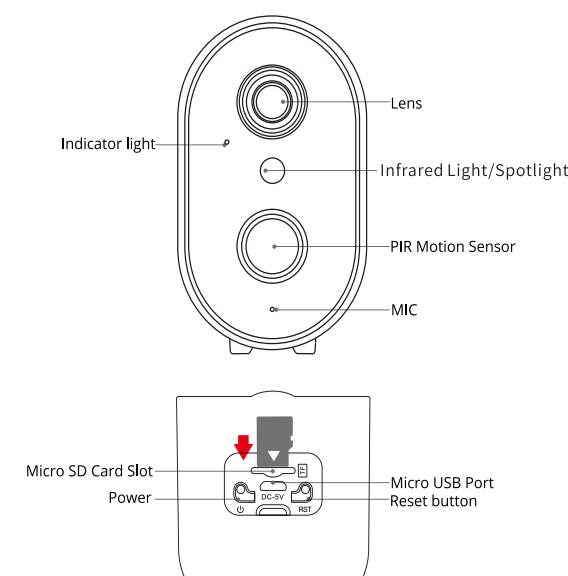
TABLE OF CONTENTS

- 01 What's Included
- 02 Product overview
- 03 App installation and Setup
- 04 Mounting the camera
- 05 Register an account
- 06 Set up WiFi for the camera
- 07 FAQ

What's Included



Product overview



CAUTION: Please insert the Micro SD Card according to the direction shown in the diagram. Micro SD Card might JAM if inserted incorrectly and device could be damaged.
SD Card Port: Support micro SD card for local storage (Max 128GB).
Reset button: Used to restore the camera to factory settings (Press and hold on 5-8s).
Card capacity requirements: 8-128GB.
Read and write speed requirements: class10 level.
File format: FAT32.

support@anran-cctv.com 01 02 support@anran-cctv.com

ANRAN App installation and Setup

Search "ANRAN" on apple store or google play to download the app.
· from Google Play
· from Apple Store
· or Scan the following QR code

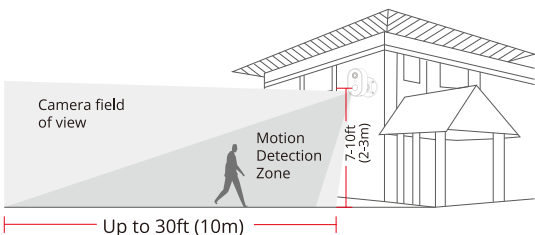


Download App (IOS & android)

Mounting the camera

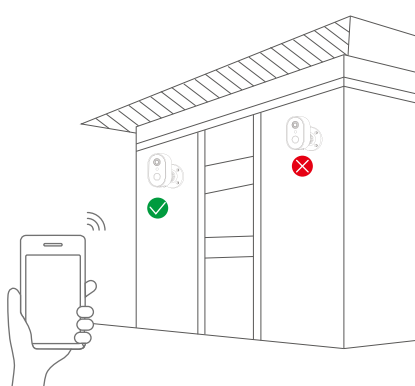
Select Height and location

Hang anranCam 7-10 ft (2-3 m) above the ground. This height maximizes the detection range of the motion detection of anranCam. Avoid placing anranCam under direct sunlight.



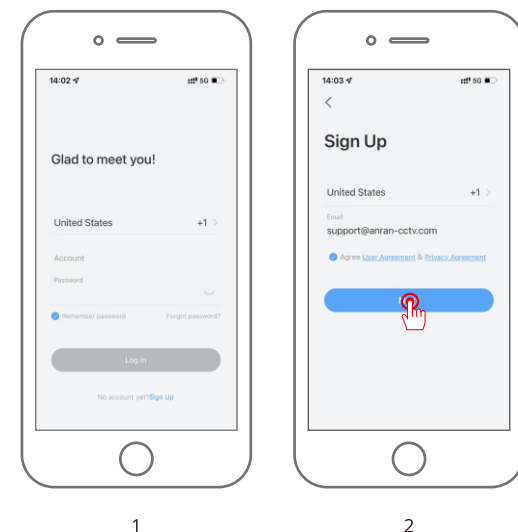
Test the Wifi signal at installation position

Use cell phone to test Wifi signal quality at the installation position before installing camera, make sure the Wifi router can provide good Wifi signal.



Register an account

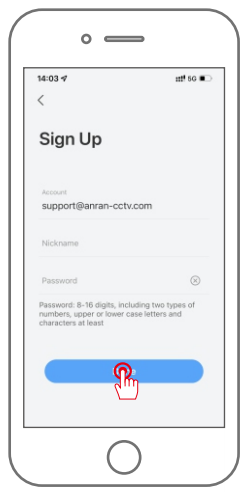
1. Open the APP to sign up an account. Go to the login interface, and click "Sign Up".
2. Sign up with your email address, and click "Next".



support@anran-cctv.com 03 04 support@anran-cctv.com

support@anran-cctv.com 05 06 support@anran-cctv.com

3. Set up an "Nickname" and "Password" for your APP, click "Done" to complete.

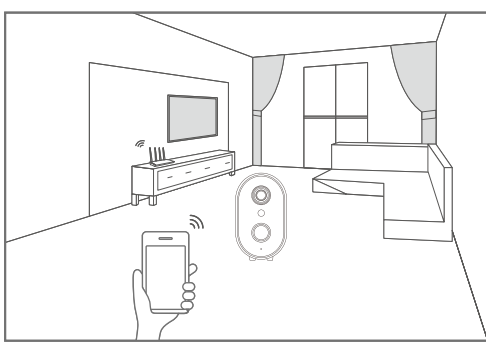


3

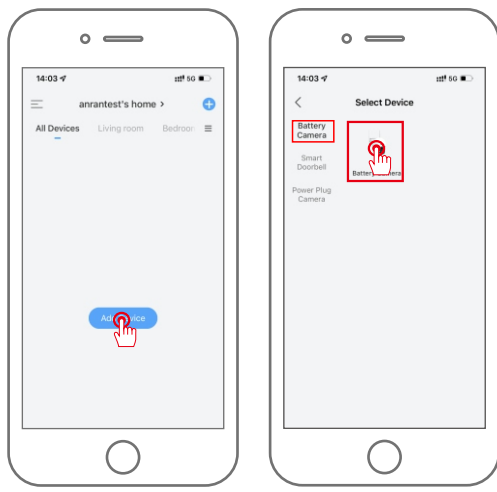
Set up WiFi for the camera

1. Put both of your mobile phone and camera near the router, and the distance should be Within a 5 meters distance.

Note: wifi camera can only connect to 2.4 Ghz WIFI signal. Do not support 5Ghz WIFI. Therefore, it only needs to connect to the WIFI signal of the family in 2.4GHz frequency band for normal use.



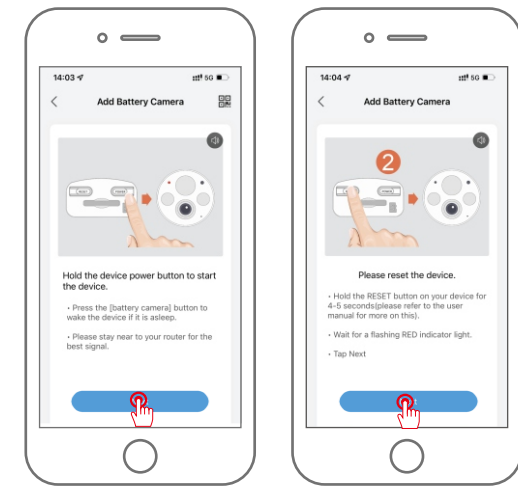
2. Log in to "ANRAN", then tap the "+" icon in the center. Tap "Battery Camera" to add device.



2-1

2-2

3. Reset the device and wait for a flashing RED indicator light, then tap "Next".



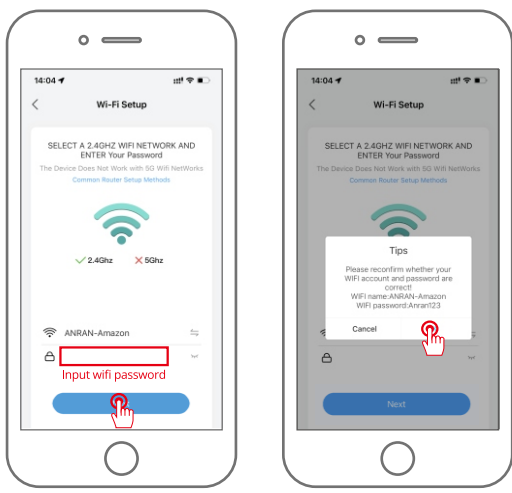
3-1

3-2

support@anran-cctv.com 07 08 support@anran-cctv.com

support@anran-cctv.com 09 10 support@anran-cctv.com

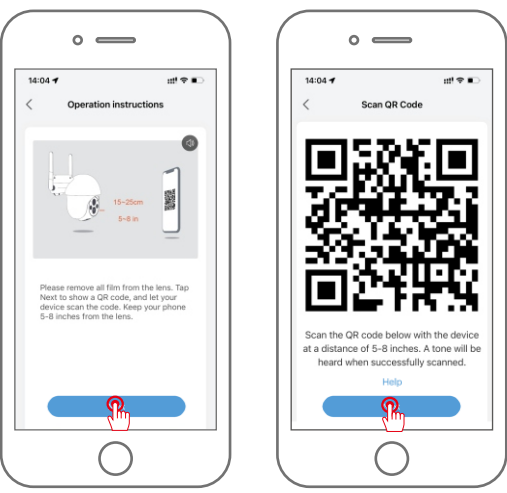
4. Selecting the Wi-Fi device needs to connected with (your home Wi-Fi), input the password and click "Next".



4-1

4-2

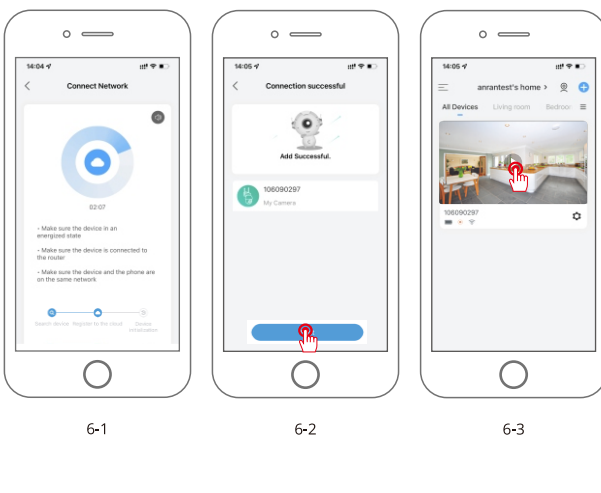
5. Using the device to scan the QR code on the mobile phone according to the operation figure shows, then proceed to the next step after hearing the prompt tone.



5-1

5-2

6. After the network configuration is successful, set the name and password for the device to add successfully; then you can view the camera screen in real time.



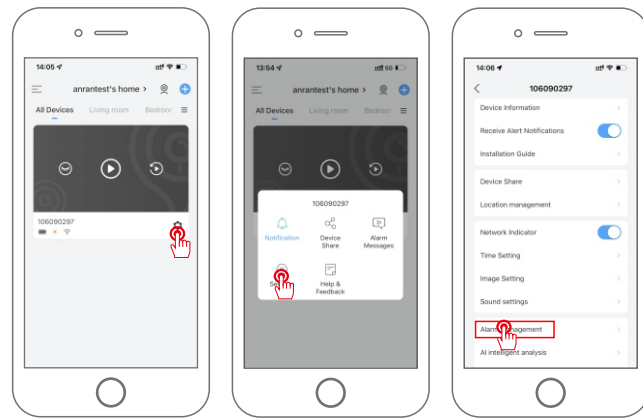
6-1

6-2

6-3

Humanoid Detection

Turn on humanoid detection, the alert will be triggered only when human motion is detected. Click the Settings button and select "Alarm Management", then enable "Motion Detection" and click "Alarm Working Mode", select "Custom Mode" and click the Settings button to set the humanoid alarm. Recording Time: The duration of each alarm video; Alarm Interval: Interval of each alarm push.



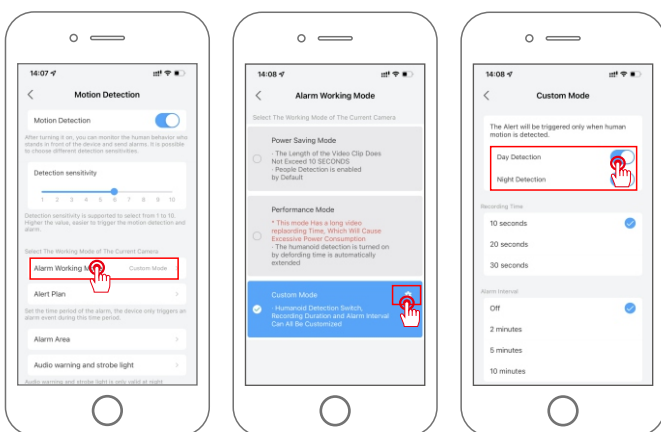
support@anran-cctv.com 11 12 support@anran-cctv.com

support@anran-cctv.com 13 14 support@anran-cctv.com

Audio warning and strobe light

Audio warning and strobe light is only valid at night.

Tips: If you want to detect other moving objects such as vehicles, please turn off humanoid detection switch. don't turn on "Day Detection" and "Night Detection".

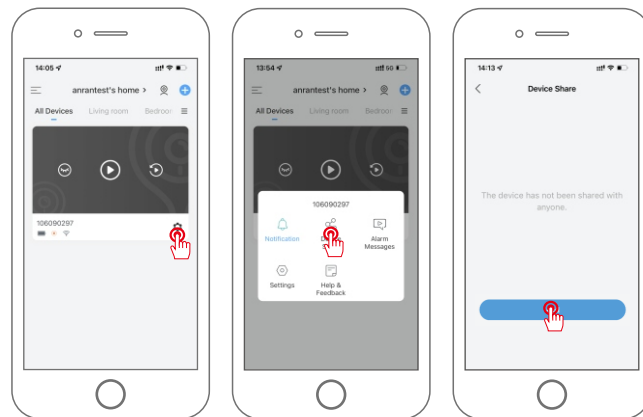


support@anran-cctv.com 15 16 support@anran-cctv.com

support@anran-cctv.com 17 18 support@anran-cctv.com

Device Share

The camera can only be added by one APP account. If other family members want to view the camera, you can share the camera with your family through the sharing function of the APP. Click the Settings button and select "Device Share" -> "Add" -> "Enter account" and input other party's APP account, then your family will receive a shared message on the APP, click Agree to view the camera you shared.



FAQ

- Q:** The device prompts offline?
A: • Check whether the equipment is in the power-on state.
• Check whether the Wi-Fi network is in good condition and restart the router.
• If the device is located far away from the router, which results in the inability to obtain a good Wi-Fi signal, it is recommended to move the router to a closer place or add a Wi-Fi amplifier to improve the Wi-Fi performance of the home.
• Delete the camera from your CloudEdge account and add it again after resetting the device.
• Check whether the device firmware and application program are the latest version.

- Q:** Why is it still in the list of devices after resetting?
A: The reset device only resets the network configuration of the camera, but cannot change the configuration on the App, remove the camera, and must be deleted by the App.

- Q:** How to cut the camera network to another router?
A: First remove and reset the device on the App and then configure the device again by the App.

- Q:** Why doesn't the device identify the SD card?
A: It is recommended to plug in SD card after power cut. Confirm whether the SD card is normally available and the format is FAT32. And the TF card can't be identified when the internet environment is not good.

- Q:** Why I can't get the notifications with my cell phone App?
A: Please confirm that the App has been running on the phone, and the relevant reminder function has been opened; Message notification and authority permission have been opened.

Safety Statement

FCC Statement
This device complies with Part 15 of the FCC Rules. Operation is subject to the following two conditions: (1) this device may not cause harmful interference, and (2) this device must accept any interference received, including interference that may cause undesired operation.
Warning: Changes or modifications not expressly approved by the party responsible for compliance could void the user's authority to operate the equipment.
Note: This equipment has been tested and found to comply with the limits for a Class B digital device, pursuant to Part 15 of the FCC Rules. These limits are designed to provide reasonable protection against harmful interference in a residential installation. This equipment generates uses and can radiate radio frequency energy and, if not installed and used in accordance with the instructions, may cause harmful interference to radio communications. However, there is no guarantee that interference will not occur in a particular installation. If this equipment does cause harmful interference to radio or television reception, which can be determined by turning the equipment off and on, the user is encouraged to try to correct the interference by one or more of the following measures: (1) Reorient or relocate the receiving antenna. (2) Increase the separation between the equipment and receiver. (3) Connect the equipment into an outlet on a circuit different from that to which the receiver is connected. (4) Consult the dealer or an experienced radio/TV technician for help.

FCC Radio Frequency Exposure Statement
The device has been evaluated to meet general RF exposure requirements. The device can be used in fixed/mobile exposure condition. The min separation distance is 20cm.
Notice: Shielded cables
All connections to other computing devices must be made using shielded cables to maintain compliance with FCC regulations.

Warranty Tips

Please fill in the following information or scan QR code to activate the free 12-month warranty from the order date on.
After finish filling or scanning, please take a picture and send it to the email(support@anran-cctv.com).
Then your free warranty will take effect!
During the warranty period, if any parts of product are damaged, please contact us immediately and we will provide satisfactory resolution.
Order Date: _____
Order Number/ID: _____
Buyer E-mail: _____
Buyer Tel: _____

Contact us

www.anran-cctv.com
support@anran-cctv.com
1-866-958-6988 (US)
44-20 8610 1559 (UK)



Free Warranty

说明书制作要求

材质:105g哑粉
成品尺寸:140x92mm,共20P
印刷:CMYK
装订方式:骑马钉,按照顺序装订