

HD wireless IP camera

User Manual

Thank you for using Anran products!

This is a quick user guide to show you how to set the camera up and run for it.

If any questions please contact us by email to support@anran-cctv.com for helps.

1. Appearance Introduction



SD Card Port: Support micro SD card for local storage (Max 128GB, at the bottom of the camera)

Reset Button: Powered on the camera and press the reset button about 2-3 seconds, then the camera will reset all the setting.

2. Install “IPC360” APP

Download the IPC360 APP and install it on your smart phone

a. Download IPC360 APP direct from APP Store (iOS) or Google Play (Android)

b. Scan the IPC360 APP QR code



iOS

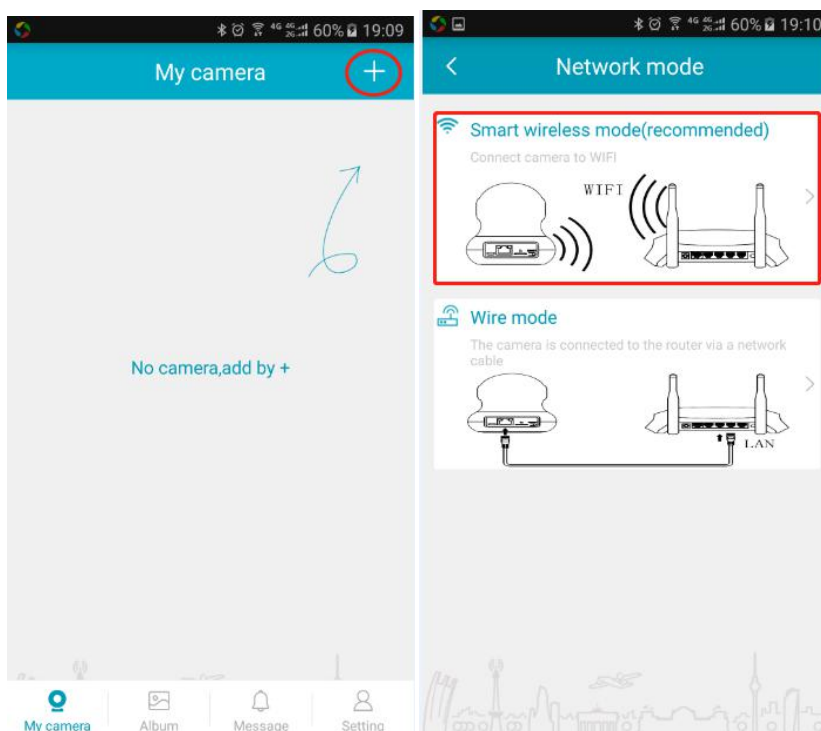


Android

2. Add camera to account

Step1. Power on the camera, open the IPC360 APP, register an account, and log in.

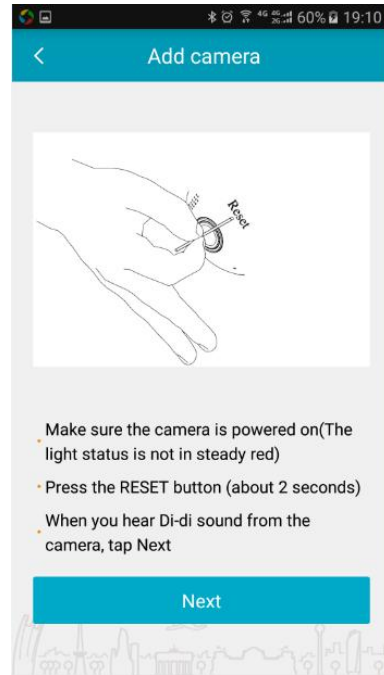
Step2. Click on '+' in top right corner, select the the Smart wireless mode.



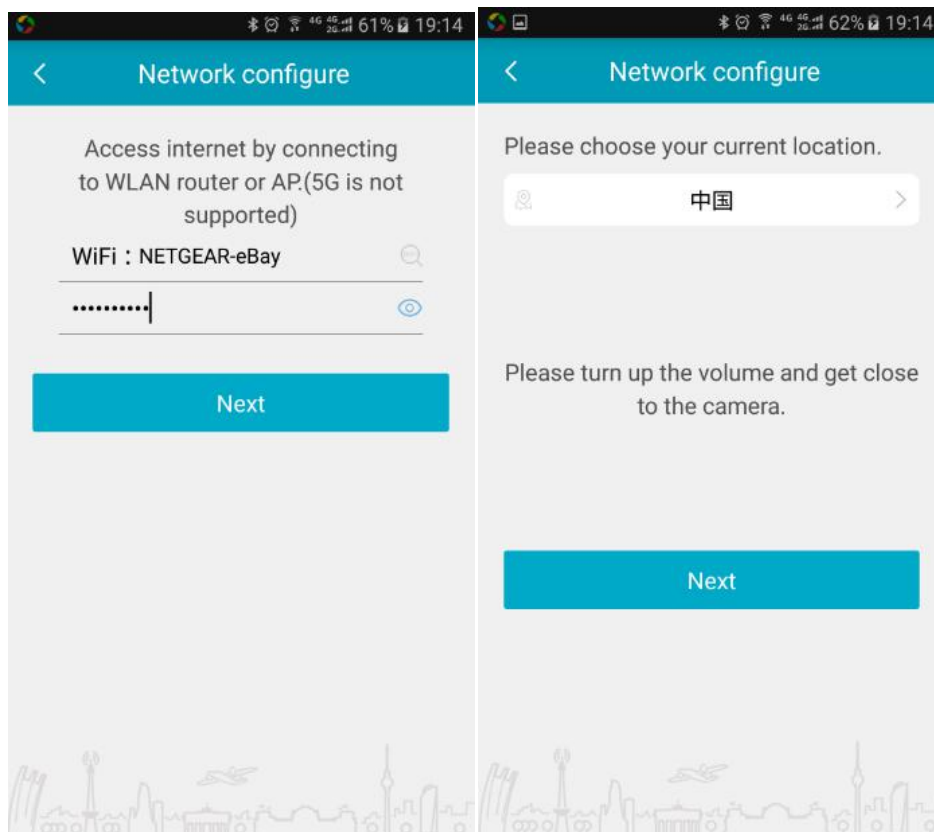
Step3. Please make sure the camera is powered on, and press the reset button for about 2-3 seconds and you will hear Di-di sound from the camera, then click "NEXT".



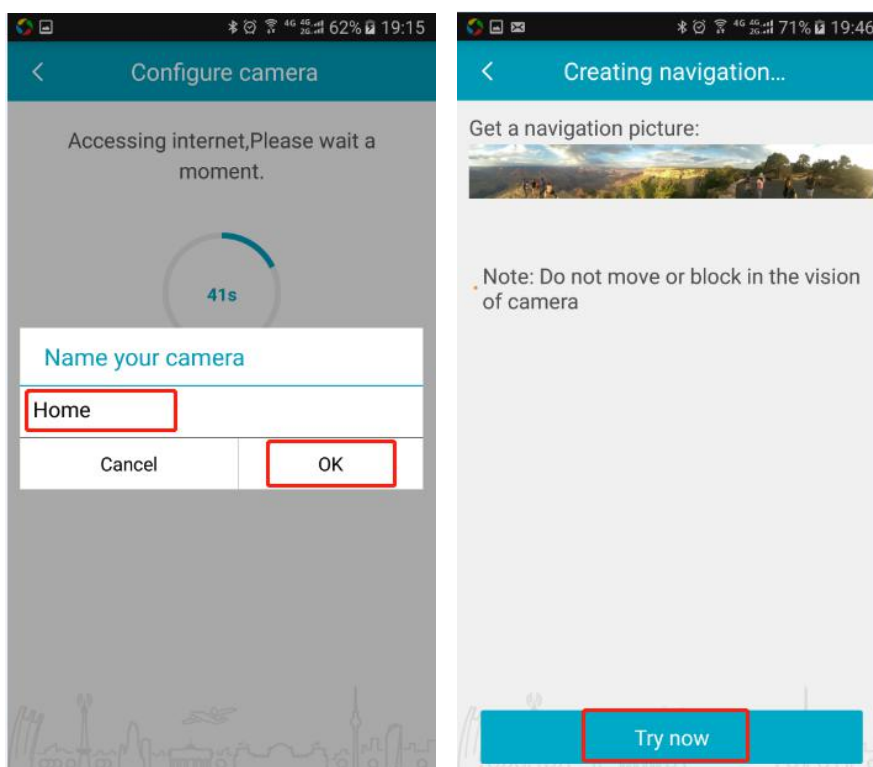
Press the reset button for about 2-3 seconds



Step4. Enter the Wi-Fi password and click "Next", then choose your current location and click "Next".



Step5. Accessing internet, please put your phone close to the camera. After the camera making a sound of 'Ding dong', then you can define your camera name and click 'OK'. Click 'Try now' to create navigation, the connection should be successful.



Tips: Please add the volume of your phone and have it as close to the camera as you can (within 30cm).

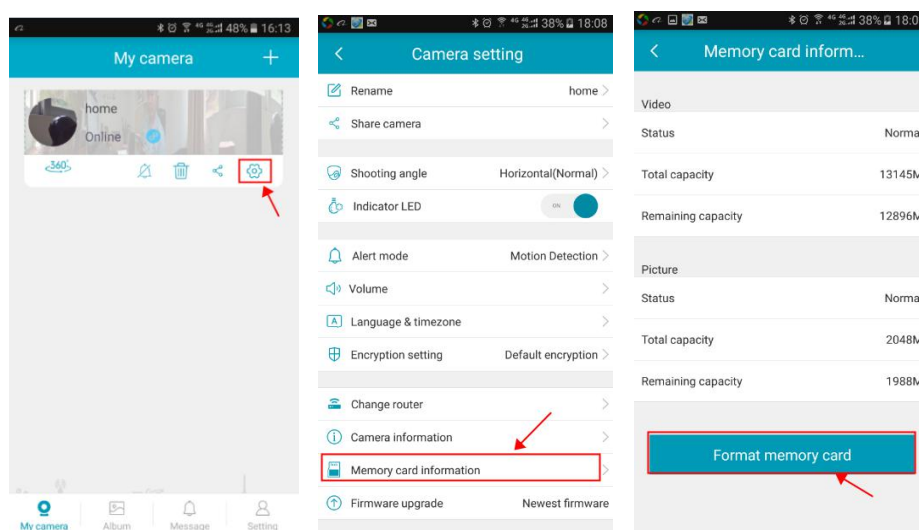
4. SD card video recording setup

When the SD card is inserted into the camera, please format it first, then the video will be recorded to SD card automatically.

Step 1: Open the APP, view the video;

Step 2: Enter the Settings screen;

Step 3: Click 'Memory card information', then format the memory card.



5. FQA

Q1. What can I do if the camera setting Wi-Fi failed?

- A: 1. Check the antenna connection is OK and the camera was powered on.
2. Make sure the camera and mobile phone near by the Wi-Fi router which the distance are not more than 3-5 meters when you setting Wi-Fi for the camera.
3. Make sure your router's Wi-Fi SSID was not be hidden, and the Wi-Fi frequency is 2.4G. The cameras don't support 5G Wi-Fi.
4. Restore the camera to factory settings and restart to setting WIFI for camera.
5. After WiFi is successfully configured for the camera, please do not put the camera too far away from the router, or the camera will be disconnected (5-15M)

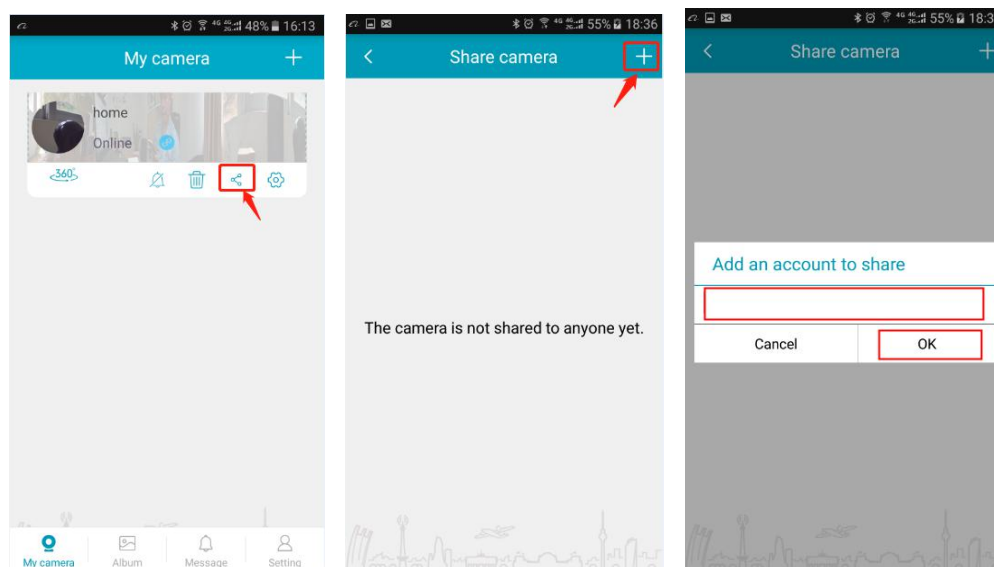
Q2. How to share the camera video to others?

A: The first person who adds the device will be the only administrator. The others who want to add the device to their APP, they need to be shared by the administrator.

Step 1: Open the APP, view the video;

Step 2: Enter the 'Share camera' screen;

Step 3: Click '+', and enter your family or friends Email address or Telephone number (your family or friends need download "IPC360" APP, too)



Thanks again, If there are any issues, please don't hesitate to contact us by sending an email to support@anran-cctv.com so we can do our best to resolve it.